

Market Trends

EXTRACT



MARKET

**The Healthcare & Pharma
Consulting Market in 2024**

Briefing

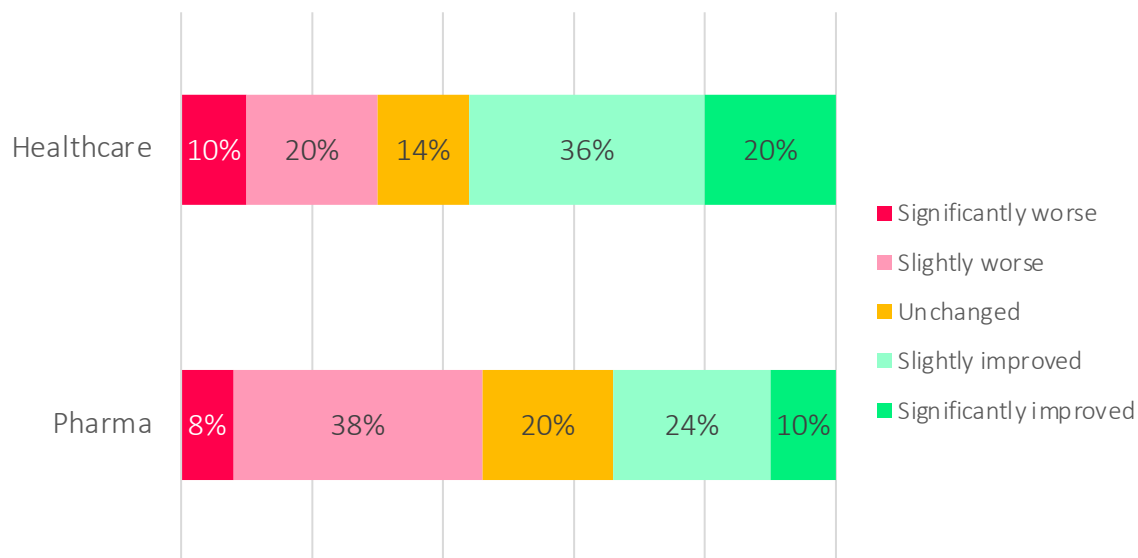
2024

Contents

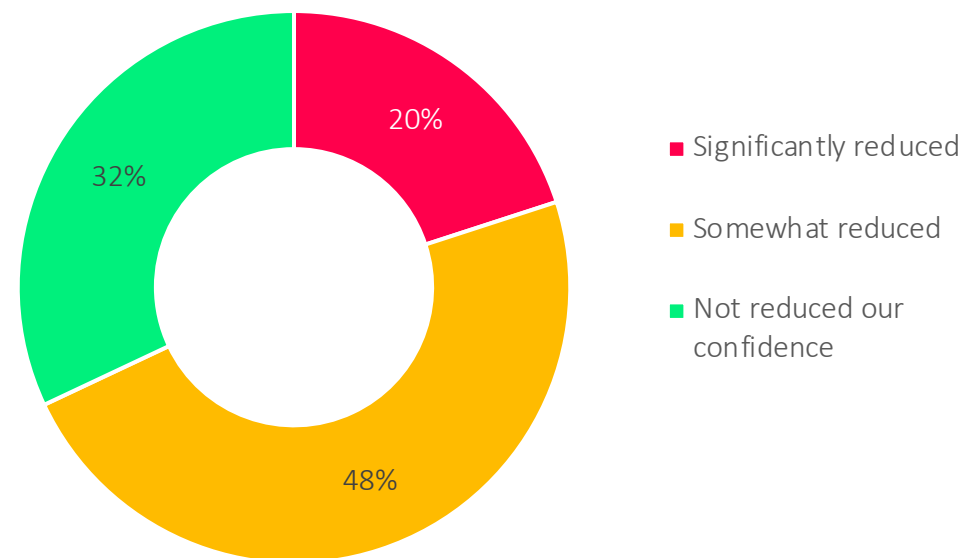
- 01** What really matters
- 02** The market in numbers
- 03** The client perspective
- 04** Implications for firms
- 05** About this report

Clients are divided in their view of economic improvement, but two thirds agree that their confidence has been reduced by macroeconomic challenges and political tensions

How has the overall economy in which your organisation operates changed compared to this time last year?



To what extent have macroeconomic and political tensions impacted your confidence when thinking about the future of your organisation?



- 01** **What really matters**
- 02** **The market in numbers**
- 03** **The client perspective**
- 04** **Implications for firms**
- 05** **About this report**

Methodology—The MegaModel

MegaModel: Our Global Data Model

The quantitative market data in this report comes from our unique model of the global professional services market. Rather than making high-level assumptions, this model has been built from the bottom up, sizing the market capability by capability—assessing how much work a firm earns delivering each professional capability within each sector and country. This results in a robust view of the size of the supply-side market, which can then be broken down to view the size of the market by country, sector, line of business, capability, and market segment.

For the purposes of this report, we’ve focused on types of firm and market segments that broadly equate to traditional definitions of consulting. Alongside this market segmentation, we also limit our market sizing and analysis to what we at Source call “big consulting”—work done by mid and large-sized firms (those with more than 50 people). Please note that we don’t track the long, thin tail of work done by contractors and very small firms, as most readers of this report would not seek or be able to compete in this part of the market.

All of the data in the model is calibrated through extensive interviews with, and surveys of, professional services firms and their clients, allowing us to discuss broader trends in the market alongside detailed dimensions such as headcount. These interviews and surveys are supplemented with desk research, which allows us to assess the impact of wider macroeconomic trends on professional services. This, combined with our detailed modelling, results in a long-term view of the market that is able to support both historic and forecast data.

All figures given in this report are in US dollars. The data in all charts has been rounded to the nearest whole number. This may result in some totals that do not equal 100%.

Definitions of sectors and services

Our definition of management consulting includes a broad range of business advisory services, but excludes:

- Tax advisory
- Audit
- The implementation of IT systems
- The delivery of outsourced/offshored services
- HR compensation/benefits administration and technology

Where mergers & acquisitions work is concerned, consulting on deals is included (under strategy), but corporate finance fees on deals themselves are generally not included, although it is not always straightforward to separate the two.

For more information about how we classify consulting services and sectors, please see “Definitions of sectors and services”.

Methodology

Client perspective

We carry out a client survey to help us build a rich picture of how different trends in the healthcare and pharmaceutical are affecting clients' organisations and their use of consulting. Our survey focuses on trends in the healthcare, pharmaceutical, and life sciences sectors, providing detailed insights into the nuances of the market. For this, we surveyed 100 senior clients of consulting firms from across the sector, all of whom work in organisations with 1,000 or more employees. This survey focuses on the following areas:

- How they expect to use consultants during 2024 and the first half of 2025.
- Factors that affect the way clients work with consulting firms.
- The ways consulting firms market themselves to clients and the impact this has on client decision making.

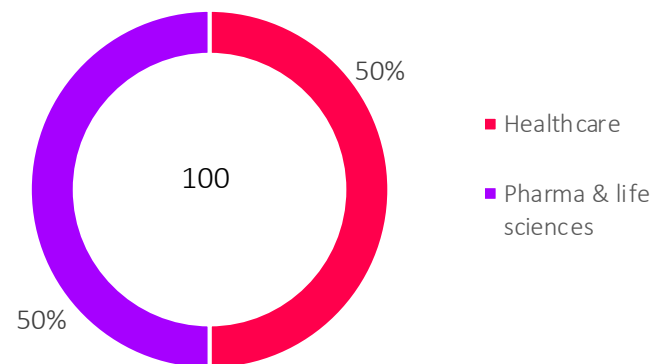
Insights from consultants

Throughout the year, Source analysts remain plugged in to the global consulting market through our bespoke research and consulting projects, adding further depth to our understanding of the consulting industry.

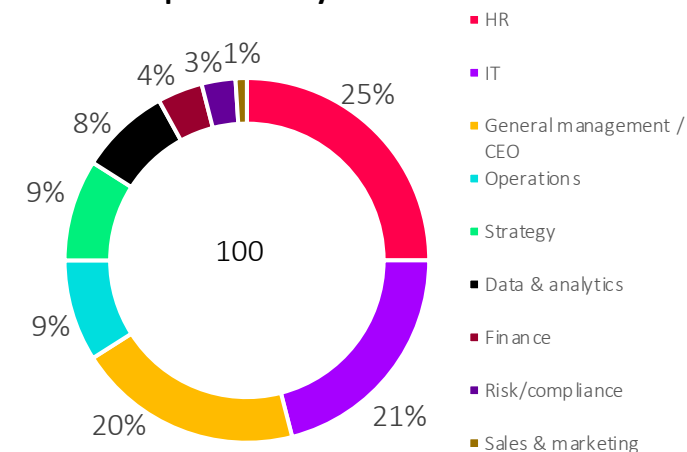
In-depth desk research

We also conducted a thorough PEST analysis in the healthcare and pharmaceutical that drills down into finer macroeconomic details on a holistic and functional basis, allowing us to fit our research into a wider macroeconomic picture.

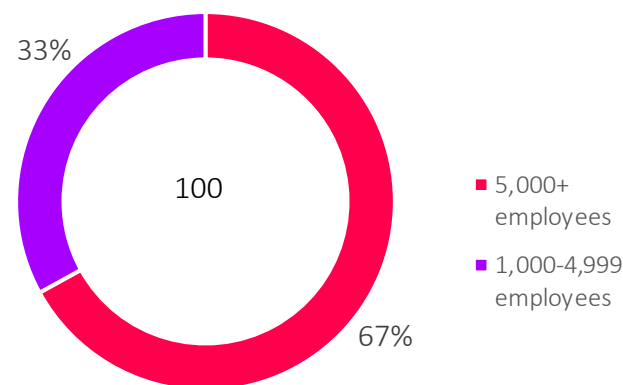
Respondents by sector



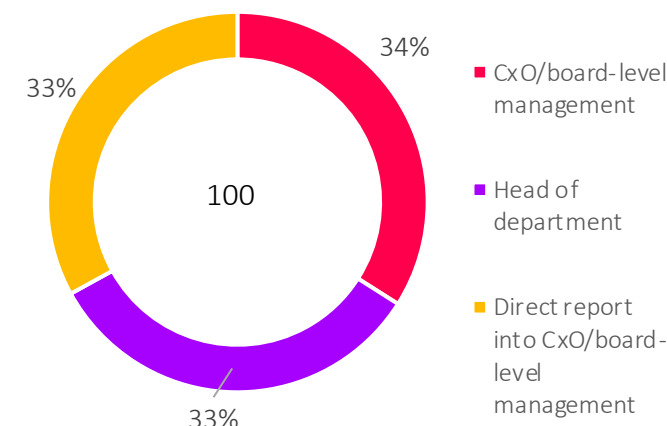
Respondents by function



Respondents by organisation size



Respondents by responsibility level



Definitions of sectors and services

Sectors

Energy & resources

Energy

Includes the exploration and production of energy, including oil, gas, coal, and renewables.

Utilities

Includes the delivery of electricity, gas, water, sanitation, and other related services.

Primary resources

Includes agriculture, chemicals and chemical products, commodities, forestry, fishing, metals, mining, and plastics.

Financial services

Banking

Includes retail banking, commercial banking, and lending.

Insurance

Includes general insurance (e.g., motor, home, pets, health—anything on an annual contract), life insurance, pension products, and retirement planning.

Private equity

Includes both consulting work for private equity firms and consulting work with private equity portfolio businesses.

Capital markets

Includes investment banking, trading of stocks and financial products, corporate finance, and broking. Investment and wealth management Includes private banking, high net-worth banking, investment management, trust funds, the management of pension funds, and asset management.

Manufacturing

Aerospace

Includes space research and technology, the manufacture of aircraft, aircraft parts, rockets and other space equipment, and tanks and ammunition.

Automotive

Includes the manufacture of motor vehicles, industrial vehicles, and vehicle supplies and parts.

Construction

Includes surveying, architectural, and engineering services, heavy construction, house building, and the building of infrastructure.

Consumer packaged goods

Includes the manufacture of clothes, foods, alcohol, tobacco, furniture, home furnishings, cleaning products, small arms, children's toys, and sports equipment.

Consumer and industrial electronics

Includes electrical components, household and industrial appliances, commercial and professional equipment.

Industrial products

Includes industrial machinery, steel and metal products, and plastic products.

Pharma & life sciences

Includes research into and the production of drugs, biological products, medicinal chemicals, and life sciences.

Healthcare

Includes private and publicly-funded healthcare, hospitals, laboratories, and medical equipment.

Public sector

Government

Includes federal/national, state/regional, local government, emergency services, justice, social services, public transport, and conservation.

Education

Includes public and private schools, universities, and libraries.

Defence

Includes national security and consulting around defence issues.

Not for profit

Includes non-commercial research organisations, religious, political and professional membership organisations, trusts, labour unions, and business associations.

Retail

Includes the selling of clothes, food, consumer goods, and automobiles.

Services

Logistics

Includes warehousing, storage, packing and crating, and distribution including cargo, freight, and haulage.

Business services

Includes services relating to law, accountancy, IT maintenance, security systems, advertising, employment agencies, and vehicle leasing.

Leisure

Includes museums, art galleries, theatre, golf courses, hotels, hospitality, travel agencies, restaurants, and bars.

Real estate

Includes estate agencies and operators of residential and commercial buildings.

Transportation

Includes private and people-related transportation, including airlines, airport management, train operators, rail infrastructure management, water transportation, courier services, and private bus services.

Technology, media & telecoms

Telecoms

Includes telephone, mobile, digital, and other communication services.

High-tech

Includes IT-related devices, computer and computer-related devices, audio and video equipment, broadcasting and communication equipment.

Media

Includes radio, television, and digital broadcasting stations and services as well as printing and publishing of newspapers, periodicals, and books.

Services

We've taken the lines of business and capabilities from our taxonomy that broadly align with traditional definitions of consulting and divided them into services that include the following. Please note that for some lines of business—for example, forensics—we've taken a subset of the relevant capabilities and excluded others.

Cybersecurity consulting

Cybersecurity advice, Cybersecurity incident response, Penetration testing & wargaming, Technology & security risk services.

HR, change & people strategy

Benefits, compensation & pensions, excluding actuarial & investment advice, Change management, Diversity & inclusion, Employee engagement, Governance & board effectiveness, HR strategy & effectiveness, Leadership, Organisational design & culture, Organisational training & development, Outplacement, Pension fund evaluation & advice, Performance management, Stakeholder management, Talent management, Team effectiveness & collaboration, Resource-efficiency strategy, Purpose-led strategy & change, Resource-efficiency implementation, Social impact & trust.

Operations

Benchmarking, Business continuity & recovery, Cost cutting, Customer service, DevOps, Distribution strategy, Lean & Six Sigma, Operational review, Outsourcing advice, Post-M&A integration, Process design, re-engineering & automation, Procurement/purchasing, Property & estate management, Sales & distribution planning, Sales force effectiveness, Supply chain management, Target operating model, Sustainable supply chain, Corporate, occupier services & facilities management, Integrated real estate developer services, Real estate deal/transaction services.

Risk & financial management

Operational risk, Programme risk, Responding to regulation, Risk management, Budgeting/financial planning process, Debt advisory, Finance function, Financial advisory, Financial restructuring & insolvency, eDiscovery, Forensic accounting.

Strategy

Capital allocation strategy, Commercial due diligence & valuation, Financial due diligence, M&A transaction strategy, Operational due diligence, Portfolio & investment strategy, Public-private partnerships, Technology due diligence, Business & financial modelling, Category management, Channel management, Corporate recovery & turnaround, Corporate restructuring, Corporate strategy, Market analysis & strategy, Policy formulation, Pricing, Strategic sourcing/offshoring services, Real estate strategy, Environmental & social impact research, Macro/microeconomic research, Market research, Customer feedback, Customer segmentation, Employee feedback, Advanced analytics, Sustainable investment.

Technology & innovation

Ideation, Innovation management, Innovation strategy, Strategies for growth from innovation, Cloud advice, ERP consulting, IT strategy, planning & review, IT training, Programme management, Vendor selection, Clean technology, Green IT, Corporate identity, Graphic & UI design, UX & service design, Customer journey & UX benchmarking, Data visualisation, Business intelligence & semantic layer.

Meet the expert

Emily Whittingham

Emily is a Consultant at Source. She works across all areas of the business to provide insights into global market trends and write analytical commentary for our client projects. She combines desk research with the data generated by Source's own surveys to map out the competitive landscape of different industries and sectors. Emily contributes to internal and bespoke client projects by conducting interviews that span a wide range of countries, industries, and sectors.

Emily Whittingham

✉ emily.whittingham@sourceglobalresearch.com



Catherine Anderson

Catherine is Director of Market Trends & Analysis. She turns qualitative and quantitative data into meaningful, strategic insights on topics across the professional services market, from sustainability to managed services.

Catherine Anderson

✉ catherine.anderson@sourceglobalresearch.com



About us

We help professional services firms **understand what really matters** when facing decisions of vital importance.

The best decisions are based on evidence, objectivity, and a willingness to change. That's why, at Source, we tell you what you need to hear, rather than what you want to hear.

We draw upon our deep roots within the professional services sector to provide firms with a clear picture of their clients' worlds. Through comprehensive research and meticulous analysis, we pinpoint what truly matters and deliver actionable insights that help firms map out the right way forward.

We believe in thriving individually and succeeding together. And we would love to help your firm crack its latest conundrum.

Source Information Services Ltd
20 Little Britain | London | EC1A 7DH
UK +44 (0) 20 3743 3934
US +1 800 767 8058
info@sourceglobalresearch.com
www.sourceglobalresearch.com

© Source Information Services Ltd 2024
Source Information Services Ltd and its agents have used their best efforts in collecting the information published in this report. Source Information Services Ltd does not assume, and hereby disclaims, any liability for any loss or damage caused by errors or omissions in this report, whether such errors or omissions result from negligence, accident, or other causes.

Publication schedule for 2024

2024		Market Trends Reports	Market Trends Briefings	Client Perception Studies	Emerging Trends Programme	White Space Reports	White Space Insights
Q1	January	Forecasts for 2024 UK GCC France	India				Featured thought leadership (monthly) Quarterly webinar series
	February				ET1 Ecosystems	Client Perceptions of Thought Leadership	
	March			UK US Germany			
Q2	April	Nordics US DACH Australia East Asia South East Asia		Financial Services GCC France			Featured thought leadership (monthly) Quarterly webinar series
	May			Retail Australia Energy & Resources			
	June			Technology, Media & Telecoms China Japan	ET2 Go-to-Market Strategy	The Source Quality Ratings Report (QRR)	
Q3	July	Africa Energy & Resources Financial Services Technology, Media & Telecoms Sustainability	South America Healthcare & Pharma		ET3 The Future of Consulting		Featured thought leadership (monthly) Quarterly webinar series
	August						
	September			Risk Tax	ET4 AI in Professional Services	The Thought Leadership Innovation Report	
Q4	October	Tax Risk Technology Planning for Growth in 2025		Audit Technology		Hot Topic Report	Featured thought leadership (monthly) Quarterly webinar series Source Thought Leadership Awards (virtual)
	November				ET5 Expertise		
	December				ET6 What Clients Will Want in 2025		